

FEATURING

Architects & Engineers

NRJ serves as architect, Brown Engineers serves as structural engineer for RPI
Robson & Woese serves as mechanical/
electrical/fire protection engineer for \$241.5m



National A/E firm Zilberstein Yaffe Prescott

CONSTRUCTION, DESIGN ENVIRONMENTAL NEW YORK REAL ESTATE JOURNAL

NEW YORK REAL ESTATE JOURNAL - SECTION C

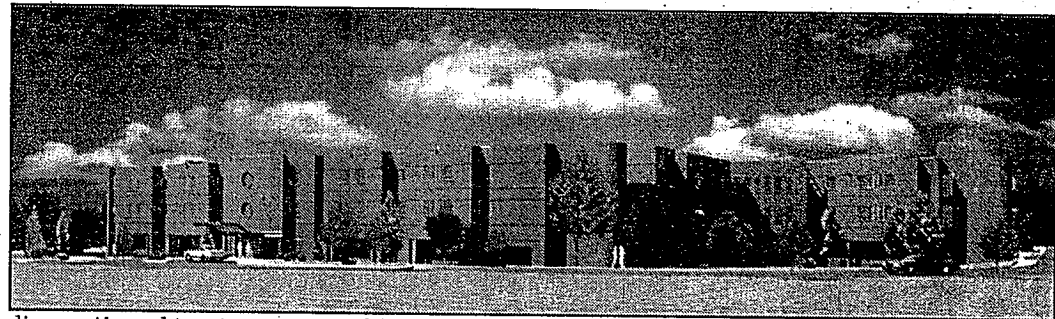
Expansion to include 134,000 s/f of construction and 20,500 s/f of alterations **Landow & Landow Archts. designs \$30m 154,500 s/f for Gurwin Geriatric Ctr.**

COMMACK, NY - The Gurwin Jewish Geriatric Center is constructing a \$30 million expansion of its facilities.

Located on a 14 acre suburban campus, the existing geriatric center, which was completed in 1988, consists of a 300 bed residential healthcare facility and a 54 slot adult day healthcare center. In 1994, the building received the honor of being selected for publication in the AIA Design for Aging Review. After 10 years, the

Gurwin Center continues to achieve its goal of being a dynamic healthcare facility, incorporating state of the art concepts and technology, while maintaining a residential atmosphere. The new Harry and Jeanette Weinberg Resident Pavilion and Community Service Center, named for the late philanthropists whose foundation donated substantial funds for the project, will enable the Gurwin Center to build on its success.

The new facility will add 160 beds as well as an outpatient



diagnostic and treatment center, a comprehensive outpatient rehabilitation facility, and more than double the size of its adult day healthcare program to 120 participants per day. The expansion, which includes 134,000 s/f of new construction and 20,500 s/f of alterations, will enable the Gurwin Center to expand its sub-acute care and rehabilitation programs for patients requiring specialized treatment.

The new facility will contain a mixture of single and double-bedded rooms. However, un-

like most nursing homes, all of the double rooms in the new building are designed using a "bi-axial" configuration. Traditionally, nursing homes use the typical hospital room model whereby both beds in a double room are placed against the same wall. Consequently, if the resident nearest the window decides to close his or her cubicle curtain, the resident closest to the door is deprived of any natural light. In a "bi-axial" room, resident's beds are arranged toe-to-toe so that each resident has their

own window and climate control and thereby, the dignity of a private room. Landow and Landow Architects accomplished this within the same square footage as the traditional room.

Landow and Landow Architects, the designers of the original project, are the architects and interior designers for the expansion which is being built by the Gotham Construction Corporation. Construction is scheduled to be completed by the spring of 1999.

MARCH 31 - APRIL 13, 1998

HI-LIGHTS

**E.W. Howell ahead of schedule
for \$17m W. Floyd H.S. proj.**